



# AP-1 (phospho Thr239) Polyclonal Antibody

<b>Catalog No</b>	YP-Ab-01222
<b>Isotype</b>	IgG
<b>Reactivity</b>	Human;Mouse;Rat
<b>Applications</b>	WB;IHC;IF;IP;ELISA
<b>Gene Name</b>	JUN
<b>Protein Name</b>	Transcription factor AP-1;jun;c-jun; AP-1
<b>Immunogen</b>	The antiserum was produced against synthesized peptide derived from human c-Jun around the phosphorylation site of Thr239. AA range:206-255
<b>Specificity</b>	Phospho-AP-1 (T239) Polyclonal Antibody detects endogenous levels of AP-1 protein only when phosphorylated at T239.
<b>Formulation</b>	Liquid in PBS containing 50% glycerol, 0.5% BSA and 0.02% sodium azide.
<b>Source</b>	Polyclonal, Rabbit,IgG
<b>Purification</b>	The antibody was affinity-purified from rabbit antiserum by affinity-chromatography using epitope-specific immunogen.
<b>Dilution</b>	WB: 1/500 - 1/2000. IHC: 1/100 - 1/300. Immunoprecipitation: 2-5 ug/mg lysate. ELISA: 1/20000.. IF 1:50-200
<b>Concentration</b>	1 mg/ml
<b>Purity</b>	≥90%
<b>Storage Stability</b>	-20°C/1 year
<b>Synonyms</b>	JUN; Transcription factor AP-1; Activator protein 1; AP1; Proto-oncogene c-Jun; V-jun avian sarcoma virus 17 oncogene homolog; p39
<b>Observed Band</b>	39-42kD
<b>Cell Pathway</b>	Nucleus.
<b>Tissue Specificity</b>	Expressed in the developing and adult prostate and prostate cancer cells.
<b>Function</b>	function:Transcription factor that recognizes and binds to the enhancer heptamer motif 5'-TGA[CG]TCA-3'.PTM:Phosphorylation enhances the transcriptional activity. Phosphorylated by PRKDC.,similarity:Belongs to the bZIP family.,similarity:Belongs to the bZIP family. Jun subfamily.,similarity:Contains 1 bZIP domain.,subunit:Heterodimer with either FOS or BATF3. Interacts with HIVP3 (By similarity). Interacts with SMAD3/SMAD4 heterodimers. Interacts with MYBBP1A, SPIB and TCF20. Interacts with COPS5; indirectly leading to its phosphorylation. Interacts with DSIPI; this interaction inhibits the binding of active AP1 to its target DNA.,
<b>Background</b>	This gene is the putative transforming gene of avian sarcoma virus 17. It encodes a protein which is highly similar to the viral protein, and which interacts directly with specific target DNA sequences to regulate gene expression. This gene is intronless and is mapped to 1p32-p31, a chromosomal region involved in



both translocations and deletions in human malignancies. [provided by RefSeq, Jul 2008],

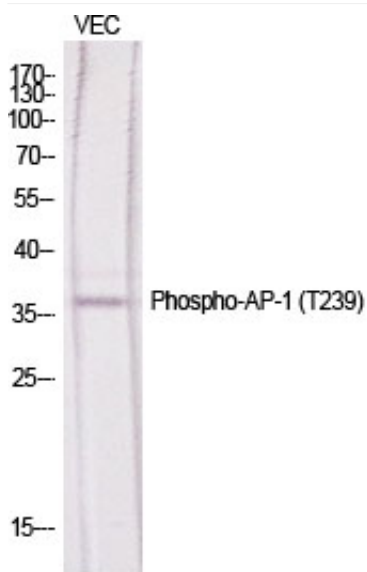
#### matters needing attention

Avoid repeated freezing and thawing!

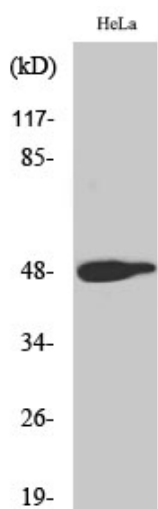
#### Usage suggestions

This product can be used in immunological reaction related experiments. For more information, please consult technical personnel.

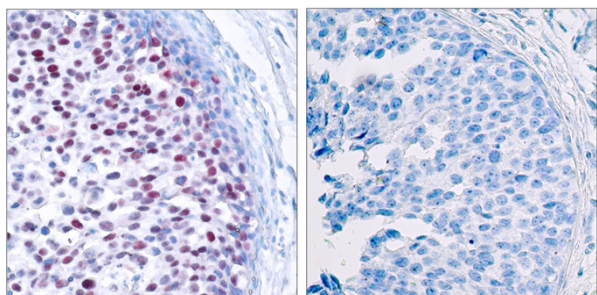
### Products Images



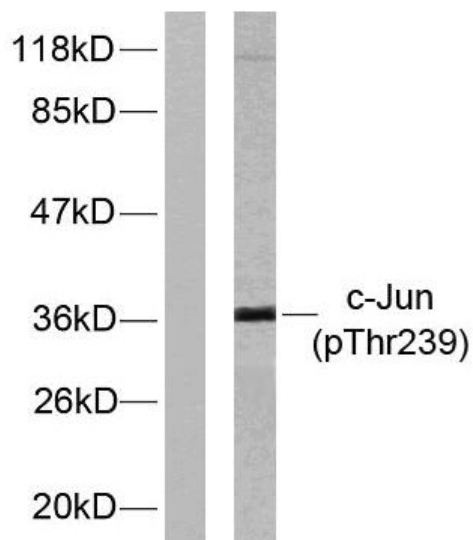
Western Blot analysis of various cells using Phospho-AP-1 (T239) Polyclonal Antibody diluted at 1:500



Western Blot analysis of HeLa cells using Phospho-AP-1 (T239) Polyclonal Antibody diluted at 1:500



Immunohistochemistry analysis of paraffin-embedded human breast carcinoma, using c-Jun (Phospho-Thr239) Antibody. The picture on the right is blocked with the phospho peptide.



Western blot analysis of lysates from HeLa cells treated with UV, using c-Jun (Phospho-Thr239) Antibody. The lane on the left is blocked with the phospho peptide.